

EDUCATE • INSPIRE • CONNECT

3 DAYS

65+ SPEAKERS

15 PANELS



Penn Law Women's Summit

March 22 – 24, 2016

University of Pennsylvania Law School, Philadelphia, PA



KNOWETH NOT THE REASON THEREOF AND THE

TRUTH, SIMPLICITY, AND CANDOR: THESE ARE THE

JOHN LEE
1800-1850
Faint inscription on a plaque.

WOMEN'S SUMMIT DEAN'S MESSAGE



It is my pleasure to welcome you to the Inaugural Penn Law Women's Summit.

Over the next three days, we endeavor to educate, inspire, and connect the incredible number of members and friends of the Penn Law community who have gathered here for what is undoubtedly the largest celebration of women in our history at Penn Law.

In doing so, we also celebrate the trailblazing work and life of Carrie Burnham Kilgore, the first woman to graduate from Penn Law, and the countless women who have followed in her footsteps. Today, women comprise nearly half of the student body at Penn Law, and the Law School is enacting vital new initiatives to train the next generation of women leaders and advocates. In partnership with global organizations such as the United Nations and with domestic legal reentry programs for professionals who have taken time off to raise families and care for loved ones, Penn Law continues to advocate for the full and equal participation and access to opportunities for women in all areas of life.

We are honored to carry on the vital work that Carrie Burnham Kilgore began in 1881, when she opened the doors to Penn Law, to the legal profession, and to civic participation more generally to the many women who would follow her since her historic graduation.

Theodore W. Ruger

Dean of Penn Law

Bernard G. Segal Professor of Law



THE REMARKABLE WOMAN

We applaud all of the

**PENN LAW
WOMEN'S SUMMIT
AWARD HONOREES**

with special congratulations

to our former partner, **PAM DALEY.**

CONFERENCE SCHEDULE

All Women's Summit events listed below will take place at the Law School or the McNeil Center for Early American Studies, unless otherwise noted.

Penn's McNeil Center for Early American Studies is located at 34th and Sansom Streets and is 400 ft. from Penn Law's 3400 Chestnut St. entrance. It is a 2 minute walk from Penn Law. Silverman 147 is located on the 1st floor of Silverman Hall, just off to the right of the 3400 Chestnut St. entrance of Penn Law.

Please note: Schedule, panelists, and room locations are subject to change.

TUESDAY, MARCH 22, 2016

12:00 pm **REGISTRATION OPENS** (GREAT HALL)

12:30–1:00 pm **LAW SCHOOL TOUR** (MEET IN GREAT HALL)

1:15–1:45 pm **LAW SCHOOL TOUR** (MEET IN GREAT HALL)

2:00–2:15 pm **WELCOME REMARKS FROM DEAN THEODORE RUGER** (FITTS AUDITORIUM)

2:30–3:30 pm **PANEL SESSION I**

OPTION 1: WOMEN IN THE JUDICIARY (SILVERMAN 147)

The Hon. Margo Brodie L'91 U.S. District Court Judge, *Eastern District of New York*

The Hon. Allison Burroughs L'88 U.S. District Court Judge, *District of Massachusetts*

***The Hon. Deborah Poritz L'77** former Chief Justice, *Supreme Court of New Jersey*

The Hon. Patty Shwartz L'86 U.S. Circuit Judge, *United States Court of Appeals for the Third Circuit*

The Hon. Karen Valihura L'88 Justice, *Supreme Court of Delaware*

OPTION 2: RETURNING TO THE WORKFORCE/SUCCESSFUL REENTRY (MCNEIL CENTER)

***EJ Borrak C'86, L'90** General Counsel, *The Stilwell Group*

Martha Keon L'93 Shareholder, *Little Mendelson P.C.*

Shari Solomon L'91 General Counsel, *Diamatrix, Inc.*

Keita Young L'95 Vice President and Assistant General Counsel, *JPMorgan Chase & Co.*

3:45–4:45 pm **PANEL SESSION II**

OPTION 1: LEADING SOCIAL CHANGE: WOMEN IN POLITICS, POLICY, AND THE PRIVATE SECTOR (SILVERMAN 147)

***Regina Austin L'74** William A. Schnader Professor of Law, *Penn Law*

Sheila Bapat L'07 Writer focusing on gender and economic justice

Helen "Nellie" Fitzpatrick Director of LGBT Affairs, *City of Philadelphia*

Nell McCarthy L'05 Senior Policy Advisor, *The White House*

OPTION 2: STARTING YOUR OWN LAW PRACTICE (MCNEIL CENTER)

Nicole Galli C'89, L'92 Managing Partner, *Law Offices of N.D. Galli LLC*

***Fran Griesing L'81** Founder, *Griesing Law*

Nicole Li L'04 Founder, *Li Law Firm*

Heather Orr L'05 Founder, *HSO Law*

*Moderator for this panel discussion

CONFERENCE SCHEDULE

TUESDAY, MARCH 22, 2016 — CONTINUED

5:00–6:00 pm PANEL SESSION III

OPTION 1: BECOMING A LAW FIRM LEADER: CLIENT DEVELOPMENT, BUILDING A BOOK OF BUSINESS, AND BEYOND (SILVERMAN 147)

Manu Gayatrinath L'04 Partner and Global Chair of Recruiting Committee, *Latham & Watkins*

Jami Wintz McKeon Global Chair, *Morgan Lewis & Bockius*

Patty Menendez-Cambo L'89 Shareholder, VP, Secretary, and Chair of Global Corporate & Securities Practice, *Greenberg Traurig*

Susan Spaeth L'89 Firmwide Managing Partner, *Kilpatrick Townsend & Stockton*

***Jane Summers L'84** Partner, *Latham & Watkins*

OPTION 2: WOMEN AND THEIR BODIES: CURRENT DEVELOPMENTS IN SEXUAL VIOLENCE AND HARASSMENT POLICIES (MCNEIL CENTER)

***Sophia Lee** Professor of Law and History, Deputy Dean, *Penn Law*

Lindsey Middlecamp L'11 Assistant City Attorney, Civil Litigation, *City of Minneapolis*

Rachel Pereira L'09 Title IX and Equal Opportunity Coordinator, *Vassar College*

Carol Tracy CGS'76 Executive Director, *Women's Law Project*

6:30–8:30 pm DINNER RECEPTION & RISING STAR AWARDS (HOTEL PALOMAR - 117 S. 17TH ST.)

6:30–7:45 pm DINNER RECEPTION

8:00–8:30 pm

INTRODUCTION AND PRESENTATION OF RISING STAR AWARDS BY PENN LAW'S VICE DEAN FOR ADMINISTRATIVE SERVICES, JO-ANN VERRIER L'83, AND REMARKS FROM HONOREES

WEDNESDAY, MARCH 23, 2016

7:15 am REGISTRATION OPENS (GREAT HALL) COFFEE AND LIGHT BREAKFAST (GOAT)

7:45–8:15 am SPEED NETWORKING & KILGORE COFFEE (HALF) HOUR (GREAT HALL)

8:30–9:00 am OPENING REMARKS FROM RANGITA DE SILVA DE ALWIS, PENN LAW'S ASSOCIATE DEAN FOR INTERNATIONAL PROGRAMS

Unfinished Business of the 21st Century: Why Women's Leadership is a Critical Cause of Our Time and Penn Law's Role in Advancing Gender Equality and Women's Rights Globally

9:15–10:15 am PANEL SESSION IV

OPTION 1: FEMALE FOUNDERS & STARTUP LEADERS: EXPLORING THE LEGAL AND BUSINESS ASPECTS OF ENTREPRENEURSHIP (MCNEIL CENTER)

Veenita Bleznak L'94 Chief Operations Officer, *IAmElemental*

***Bernice Grant** Clinical Supervisor & Lecturer for Entrepreneurship Legal Clinic, *Penn Law*

Jessup Shean L'12, WG'12 Vice President, *Greenhill & Co.*; Co-Founder, *Common Bond*

Jan Buckner Walker L'88, President, Executive Editor, and Chief Creative Officer, *Kids Across Parents Down*

*Moderator for this panel discussion

CONFERENCE SCHEDULE

OPTION 2: ADVISING IN HOUSE: INFLUENCING AND LEADING INTERNAL COMMUNICATION, COMPLIANCE, CRISIS MANAGEMENT & CHANGE (SILVERMAN 147)

Lisa Detwiler SVP, General Counsel and CCO of *FS2 Capital Partners*, a *Franklin Square* company

***Ann Laupheimer L'84** Partner, *Blank Rome LLP*

Melissa Orlen L'97 Executive Vice President and General Counsel, *MovieTickets.com, Inc.*

Pilar Ramos C'94, L'97 Executive Vice President, Associate General Counsel- North America, *Mastercard International*

Cheryl Solomon L'95 Former Chief Legal Officer, *TOMS Shoes*

10:30–11:30 am PANEL SESSION V

OPTION 1: NATIONAL SECURITY, COUNTERTERRORISM, AND THE MEDIA (SILVERMAN 147)

Julie Edelstein L'07 Trial Attorney, *U.S. Department of Justice, National Security Division, Counterintelligence and Export Control Section*

***Claire Finkelstein** Algernon Biddle Professor of Law and Professor of Philosophy, *Penn Law*

Jennifer Arbitier Williams C'92, L'95 Assistant U.S. Attorney, U.S. Attorney's Office, *Eastern District of Pennsylvania*

Aretae Ortiz Wyler L'07 General Counsel and Director, Corporate Operations, *Atlantic Media Company*

OPTION 2: PAY EQUITY AND GENDER DISCRIMINATION IN THE WORKPLACE

(MCNEIL CENTER)

Sheerine Alemzadeh L'11 Law Clerk, *U.S. Court of Appeals for the 7th Circuit*;
Co-Founder, *Coalition Against Workplace Sexual Violence*

Sherrie Savett CW'70, L'73 Managing Shareholder & Chair, Securities Litigation, *Berger & Montague*

Nicole Sugarman L'09 Assistant General Counsel, *Drexel University*

***Tess Wilkinson-Ryan L'05** Professor of Law and Psychology, *Penn Law*

Kam Wong L'94 Vice President, Diversity & Inclusion Planning & Administration, *Prudential Financial Inc.*

11:45–1:15 pm WACHTELL, LIPTON, ROSEN & KATZ LUNCHEON + SUMMIT AWARDS

(LEVY CONFERENCE CENTER)

- Introduction: Dean Theodore Ruger
- Presentation of *Summit Awards*: University of Pennsylvania President Amy Gutmann
- Acceptance Remarks: Pamela Daley L'79, Ambassador Melanne Verveer, Patricia Viseur Sellers L'79, and Chair Mary Jo White

1:30–2:30 pm PANEL SESSION VI

OPTION 1: WOMEN AND WOMEN LAWYERS IN THE BOARDROOM (SILVERMAN 147)

Helen Pudlin L'74 Former Executive Vice President and General Counsel, *PNC Financial Services Group*;
Director, *Penn Mutual Life Insurance Company*; Former Director, *BlackRock, Inc.*;
Chair of the Board of Trustees, *Wistar Institute*

Gail Liono L'74 Director, *Sargento Foods, Inc., Badger Meter, Inc., and The F. Dohmen Co.*;
Former Executive President, General Counsel, Secretary & Chief Compliance Officer, *Harley-Davidson, Inc.*

Pam Daley L'79 Senior Vice President, GE, Retired, Senior Advisor to the Chairman,
Corporate Business Development

***Suzanne Mayes L'91** Member & Chair, Public & Project Finance, *Cozen O'Connor*;
President, *Forum of Executive Women*

Vicki Kramer President & Founding Member, *The Thirty Percent Coalition*; Former Board Member, *Women's Law Project*

*Moderator for this panel discussion

CONFERENCE SCHEDULE

WEDNESDAY, MARCH 23, 2016 — CONTINUED

2:45–3:45 pm PANEL SESSION VII

OPTION 1: WOMEN, PEACE, AND SECURITY: AN INTERNATIONAL PERSPECTIVE

(MCNEIL CENTER)

***Rangita de Silva de Alwis**, Associate Dean for International Programs, Penn Law

Stephenie Foster L'86 Senior Advisor, Secretary's Office of Global Women's Issues, U.S. Department of State

Patricia Viseur Sellers L'79 Special Advisor for Prosecution Strategies, International Criminal Court at The Hague

Petra Smutny GL'13 Former Judge, Court of Appeals, Vienna; Attorney, Klantzei Plaz Law Firm

Ambassador Melanne Verveer First U.S. Ambassador-at-Large for Global Women's Issues

OPTION 2: NARCOTICS IN AMERICA (SILVERMAN 147)

Catherine Henry Senior Litigator, Federal Community Defender Office, Eastern District of Pennsylvania; Lecturer, Penn Law

Desiree Maxwell Special Agent, Philadelphia FBI Safe Streets Violent Drug Gang Task Force

Faith Taylor Moore C'81 Assistant U.S. Attorney and Deputy Chief, Organized Crime Drug Enforcement

Task Force/Narcotics, U.S. Attorney's Office, Eastern District of Pennsylvania

***The Hon. Gene Pratter L'75** U.S. District Court Judge, Eastern District of Pennsylvania

4:00–5:00 pm PANEL SESSION VIII

FROM SANSOM STREET TO THE SILVER SCREEN:

A CONVERSATION ON WRITING AND ENTERTAINMENT LAW (SILVERMAN 147)

Victoria Cook L'98 Partner and Member of the Entertainment Group, Frankfurt Kurnit Klein & Selz, PC

***Heather Frattone L'98** Associate Dean for Professional Engagement, Penn Law

Kim McCreight L'98 Author, *Reconstructing Amelia* and *Where They Found Her*

6:00–6:45 pm COCKTAIL RECEPTION (GREAT HALL)

6:45 pm GROUP PHOTO (GREAT HALL STAIRS)

7:00–9:00 pm MORGAN, LEWIS & BOCKIUS GALA DINNER + KILGORE AWARDS (LEVY CONFERENCE CENTER)

- Introduction and Presentation of Kilgore Awards: Penn Law Dean Theodore Ruger
- Video Message: Hillary R. Clinton & In-Person Acceptance of Award by Ambassador Melanne Verveer, on Behalf of Secretary Clinton
- Keynote Address: Safra Catz W'83, L'86

THURSDAY, MARCH 24, 2016

8:00–9:00 am INFORMAL 3 MILE RUN/WALK THROUGH PHILADELPHIA (MEET/ENDS AT PENN LAW)

Join us and see the local sites on the go! Our path may include Boathouse Row, the Art Museum Steps (a la Rocky!) and the new Schuylkill River path

9:30–10:30 am LIGHT BREAKFAST Available for pickup (MCNEIL CENTER)

10:30–11:30 am PANEL SESSION IX:

BUILDING YOUR PROFESSIONAL BRAND, ONLINE & OFFLINE (MCNEIL CENTER)

Elizabeth Fenton L'98 Partner, Saul Ewing LLP

Jana Landon L'99 Counsel; Founder & Chair, E-Discovery Team, Stradley Ronon Stevens & Young LLP

Alva Mather L'04 Partner, Pepper Hamilton LLP

***Tiffany Southerland SPP'08, L'11** Professional Recruitment Manager, Pepper Hamilton LLP

CARRIE BURNHAM KILGORE AWARDS

Honoring trailblazing women leaders whose exemplary careers and/or advocacy have served as catalysts for change. The Carrie Burnham Kilgore Awards will be presented at the Summit by Ted Ruger, Dean, University of Pennsylvania Law School.



Hillary R. Clinton

U.S. Secretary of State, 2008-2012 (New York, NY)

Accepting via video message

Hillary Clinton has served as Secretary of State, Senator from New York, First Lady of the United States, and First Lady of Arkansas. She has also worked as a lawyer, law professor and lifetime activist.

Following law school, she joined the Children's Defense Fund and worked as a member of the Congressional Committee staff assisting the House Judiciary Committee with its investigation of the Nixon administration. She later co-founded the Arkansas Advocates for Children and Families and served on the faculty of the University of Arkansas Law School before joining the Rose Law firm in 1976 and becoming the firm's first female partner in 1979.

As the United States's First Lady in 1993, she chaired the Task Force on Health Care Reform, and in 1995 she led the U.S. delegation to Beijing for the U.N. 4th World Conference on Women, giving the now-famous speech declaring that "women's rights are human rights."

She was elected Senator from the state of New York in 2000 (as the first woman Senator from New York and the first First Lady to be elected to the U.S. Senate), and after winning re-election in 2006, she served in this role through 2009.

She was nominated by President-elect Obama to the position of Secretary of State, and sworn in as the 67th Secretary of State of the United States on January 21, 2009.

Secretary Clinton graduated from Wellesley College in 1969, and received her J.D. from Yale Law School in 1974.



Safra Catz W'83 L'86

Co-CEO, Oracle Corporation (Redwood City, CA)

Accepting in person and presenting dinner keynote on 3/23

Safra A. Catz is Chief Executive Officer of Oracle Corporation where she is responsible for global operations. She has been a member of the company's Board of Directors since 2001 and currently serves on Oracle Corporation's Executive Management Committee.

She previously served as Oracle's President and as the company's Chief Financial Officer. Catz first served as Oracle's Chief Financial Officer from 2005 to 2008, as Executive Vice President from 1999 to 2004, and as Senior Vice President from April to October 1999.

She has served on the Board of Directors for HSBC Holdings, one of the world's largest banking and financial services organizations, since 2008, and she also lectures as an adjunct faculty member at Stanford University's Graduate School of Business, where she teaches a course on Mergers & Acquisitions.

Prior to joining Oracle Corporation, Ms. Catz was at Donaldson, Lufkin & Jenrette, a global investment banking group (since 1986) where she was a Managing Director from February 1997 to March 1999.

Ms. Catz graduated with a B.S. from the Wharton School of the University of Pennsylvania and is a 1986 graduate of the University of Pennsylvania Law School.

SUMMIT AWARDS

Honoring outstanding women leaders whose careers and advocacy at the highest levels inspire and enable the continuing advancement of women. The Summit Awards will be presented at the Summit by **Dr. Amy Gutmann, President, University of Pennsylvania.**



PAMELA DALEY L'79

Senior Vice President, GE, Retired, Senior Advisor to the Chairman, Corporate Business Development

Accepting in person at lunch on 3/23

Miss Daley received her A.B. degree with highest honors from Princeton University in 1974 in Romance Languages and Literatures. In 1979, she graduated first in her class from

the University of Pennsylvania Law School, where she served as Editor-in-Chief of the Law Review. Prior to joining GE, Miss Daley was a tax partner at Morgan, Lewis & Bockius, a large global law firm headquartered in Philadelphia. She was an adjunct professor at the University of Pennsylvania Law School from 1982 through 1989, teaching Federal Income Taxation of Partners and Partnerships.

Miss Daley joined GE in 1989 as Tax Counsel and was Vice President and Senior Counsel for Transactions from 1991 to 2004. In July 2004 Miss Daley became Vice President – Corporate Business Development and was promoted to Senior Vice President in 2005. In this position, Miss Daley was responsible for GE's mergers, acquisitions, and divestiture activities worldwide (acquisitions, dispositions, joint ventures, alliances, and other business development arrangements). Miss Daley became Senior Vice President, Senior Advisor to the Chairman in April, 2013. Miss Daley retired from GE on January 1, 2014.

Miss Daley serves on the Boards of BlackRock, Inc. [NYSE: BLK], a global asset management company, BG Group plc [LSE: BG.L], a global gas and oil company, the University of Pennsylvania Law School, and The Juilliard School. She is a past director of Genworth Financial, Inc. [NYSE: GNW] (2004-2006), General Electric Capital Corporation (2004-2013), the GE Foundation (1999-2013), and the University of Pennsylvania Board of Trustees (2007-2012). She is also a past director of the World Wildlife Fund (2004-2010) and currently is a member of WWF's National Council.



HON. PHYLLIS KRAVITCH L'44

Senior Circuit Judge, U.S. Court of Appeals for the 11th Circuit (Atlanta, GA)

Phyllis Kravitch is a Senior Circuit Judge on the United States Court of Appeals for the Eleventh Circuit, and sits in Atlanta, Georgia.

Judge Kravitch worked in private practice from 1944 to 1976, as one of the first woman trial lawyers in the South. She was the first woman president of the Savannah Bar Association (in 1973), and served from 1977 to 1979 as a judge on the Superior Court of the Eastern Judicial Circuit of Georgia. In 1979, she was the first woman

judge on the Fifth Circuit Court of Appeals, and in 1979, she was nominated, and ultimately appointed, to the federal bench (to the Fifth Circuit Court of Appeals) by President Jimmy Carter.

In 1981, when the Fifth Circuit was split into the Fifth and Eleventh Circuit, Kravitch became a judge on the Eleventh Circuit, where she still sits as of 2015. Kravitch took senior status on December 31, 1996.

Judge Kravitch attended Armstrong Junior College in her hometown of Savannah, Georgia, receiving an A.A. in 1939, and she later obtained her B.A. from Goucher College in Baltimore, Maryland in 1941. As a law student, she served on the Law Review Board of Editors at the University of Pennsylvania Law School, where she received her LL.B. in 1944.



AMBASSADOR MELANNE VERVEER

Executive Director, Georgetown Institute for Women, Peace, and Security, and Former U.S. Ambassador-at-Large for Global Women's Issues (Washington, DC)

Accepting in person at lunch on 3/23

Melanne Verveer is currently the Executive Director of Georgetown University's Institute for Women, Peace, and Security. Prior to this role,

she served as the first U.S. Ambassador for Global Women's Issues, a position to which she was nominated by President Obama in 2009. In that capacity, she coordinated foreign policy issues and activities relating to the political, economic and social advancement of women, traveling to nearly sixty countries. She worked to ensure that women's participation and rights are fully integrated into U.S. foreign policy, and she played a leadership role in the Administration's development of the U.S. National Action Plan on Women, Peace and Security. In addition to her work as a U.S. Ambassador, President Obama also appointed her to serve as the U.S. Representative to the UN Commission on the Status of Women.

From 2000-2008, she was the Chair and Co-CEO of Vital Voices Global Partnership, an international NGO that she co-founded to invest in emerging women leaders. During the Clinton administration, she served as Assistant to the President and Chief of Staff to the First Lady, where she led the effort to establish the President's Interagency Council on Women and was instrumental in the adoption of the Trafficking Victims Protection Act of 2000. In 2013, she was the Humanitas Visiting professor at Cambridge University.

She is a member of the Council of Foreign Relations and the World Bank Advisory Council on Gender and Development, and she is also the co-author of *Fast Forward: How Women Can Achieve Power and Purpose* (2015).

Ambassador Verveer has a B.S. and M.S. from Georgetown University.

AWARDS & HONOREES

SUMMIT AWARDS



Patricia Viseur Sellers L'79

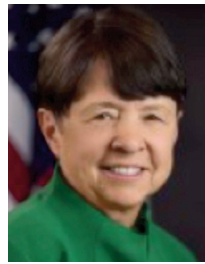
Special Advisor for Prosecution Strategies to the Prosecutor, International Criminal Court (Brussels, Belgium)
Accepting in person at lunch on 3/23

Patricia Viseur Sellers is Special Advisor for Prosecution Strategies to the Prosecutor of the International Criminal Court in The Hague and a Visiting Fellow at Kellogg College of Oxford University, where she teaches International Criminal Law on the Masters of Human Rights faculty. She has served as the Special Advisor to the UN High Commissioner for Human Rights and to the Secretary General's Special Representative for Children in Armed Conflict, as well as advised governments, international organizations, and civil society groups.

From 1994-2007, Ms. Sellers was the Legal Advisor for Gender Related Crimes and Senior Acting Trial Attorney in the Office of the Prosecutor for the International Criminal Tribunals for the former Yugoslavia and Rwanda. In that capacity, she advised on the prosecution of sex based crimes under the tribunals' statutes and pertinent doctrines of humanitarian law. She has litigated and advised on the leading international criminal law cases regarding wartime sexual violence, sexual violence and genocide, and sexual violence and enslavement as crimes against humanity. She has lectured widely, testified as an expert witness, and authored numerous articles on international criminal law.

Prior to her work as an international prosecutor, she served at the Directorate General for External Relations at the European Commission, worked with the Ford Foundation in Rio de Janeiro, Brazil, and practiced as an attorney with the Philadelphia Defender Association.

Ms. Sellers earned her B.A. from Rutgers University in 1976, and her J.D. from the University of Pennsylvania Law School in 1979.



Mary Jo White

Chair, U.S. Securities and Exchange Commission (Washington, DC)
Accepting in person at lunch on 3/23

Mary Jo White was sworn in as the 31st Chair of the SEC in April 2013, upon nomination by President President Barack Obama and confirmation by the U.S. Senate.

She arrived at the SEC with decades of experience as a federal prosecutor and securities lawyer. As the U.S. Attorney for the Southern District of New York from 1993 to 2002, she specialized in prosecuting complex securities and financial institution frauds and international terrorism cases. Under her leadership, the office earned convictions against the terrorists responsible for the 1993 bombing of the World Trade Center and the bombings of American embassies in Africa. She is the only woman to hold the top position in the 200-year-plus history of that office.

Prior to becoming the U.S. Attorney for the Southern District of New York, she served as the First Assistant U.S. Attorney and later Acting U.S. Attorney for the Eastern District of New York from 1990 to 1993. She previously served as an Assistant U.S. Attorney for the Southern District of New York from 1978 to 1981 and later Chief Appellate Attorney of the Criminal Division.

After leaving her U.S. Attorney post, Chair White became chair of the litigation department at Debevoise & Plimpton in New York, where she led a team of more than 200 lawyers. Chair White previously was a litigation partner at the firm from 1983 to 1990 and worked as an associate from 1976 to 1978. Following law school she also served as a law clerk to the Honorable Marvin E. Frankel of the U.S. District Court for the Southern District of New York.

She has served as a director of the NASDAQ Stock Exchange and on its executive, audit, and policy committees, and she is a member of the Council on Foreign Relations.

Chair White earned her undergraduate degree, Phi Beta Kappa, from William & Mary in 1970, her master's degree in psychology from The New School for Social Research in 1971, and her J.D. in 1974 at Columbia Law School, where she was an officer of the Law Review.

AWARDS & HONOREES

RISING STAR AWARDS

Honoring established and future women leaders showing great promise and professional achievements in their first ten years post-graduation.



Nermeen Arastu L'08

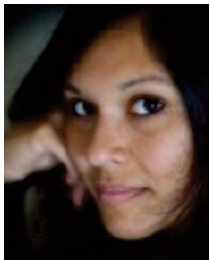
Clinical Law Professor and Supervising Attorney, City University of New York (CUNY) School of Law's Immigrant & Non-Citizen Rights Clinic (New York, NY)

Accepting in person at dinner on 3/22

Nermeen Arastu is a Clinical Law Professor and Supervising Attorney in the Immigrant & Non-Citizen Rights Clinic at the City University of New York's School of Law. Prior to joining CUNY's faculty, Ms.

Arastu was a litigation associate at Simpson Thacher & Bartlett, LLP and a staff attorney at the Asian American Legal Defense and Education Fund (AALDEF). At AALDEF, she led the Immigrant Rights Program and Post-9/11 Civil Liberties Project. Through the course of her *pro bono* work at Simpson Thacher and tenure at AALDEF, she managed an immigration docket which included deportation defense, suppression, asylum, citizenship and green card interviews, and various other immigration processes. Additionally, while at AALDEF, she oversaw monthly immigration clinics in conjunction with various community-based organizations, litigated matters relating to zoning and houses of worship, addressed anti-Muslim bias in the immigration system, and advocated against racial and religious profiling and law enforcement surveillance. She has also worked at the Legal Assistance Centre of Namibia and in the Immigrant Women Program at Legal Momentum (formerly NOW Legal Defense) where she focused on policy relating to gender-based violence.

Ms. Arastu received her undergraduate degree from the University of North Carolina-Chapel Hill and her J.D. from the University of Pennsylvania Law School in 2008.



Sheila Bapat L'07

Author, *Part of the Family? Nannies, Housekeepers, Caregivers, and the Battle for Domestic Workers' Rights* (San Francisco, CA)

Accepting in person at dinner on 3/22

Sheila Bapat is an author and freelance writer focusing on economic and gender justice. Her first book, *Part of the Family?: Nannies, Housekeepers, Caregivers, and the Battle for Domestic Workers' Rights* was published by Ig Publishing in June 2014.

Part of the Family has been adopted by several university professors in their teaching, and was featured in U.S. News and World Report and Ms. Magazine. Her recent multi-city book tour included collaborations with the National Domestic Workers' Alliance, the Institute for Policy Studies, and the University of Illinois-Chicago. Her work has appeared in *Jacobin*, *Salon*, *Reuters*, *Slate*, *Alternet*, *Truthout*, the University of Pennsylvania's *Journal of Labor and Employment Law*, *PolicyMatters*, and the Center for Women Policy Studies' series, "Reproductive Laws for the 21st Century."

Ms. Bapat also works full time as a Program Director for the California Bar Foundation where she has launched the California Public Interest Legal Fellowship Program. This new program funds diverse 3Ls and attorneys to provide legal aid to under-served California regions that Sheila has so often championed through her writing. Inspired by New York City's Immigrant Justice Corps, this California fellowship program seeks to ignite the public interest careers of diverse California attorneys while also improving access to justice for middle and low income California communities.

Ms. Bapat received her B.A. from the University of Arizona and she received her J.D. from the University of Pennsylvania Law School in 2007.



Linda Shi L'09

General Counsel, 50onRed (Philadelphia, PA)
Accepting in person at dinner on 3/22

Linda Shi is the General Counsel for 50onRed, a Philadelphia-based digital media and technology company. In this role, she serves as chief legal counsel and head of compliance for the organization, with her practice focusing on technology, privacy, and intellectual property law issues and their real life applications to early stage

startups as well as international corporations. She was recently recognized by the Philadelphia Business Journal with the 2015 Top Corporate Counsel Award for her advisory work.

An engineer as well as a lawyer by training, she is also the co-founder of Likuma Laboratories, an industrial design and product engineering firm based in Philadelphia.

Prior to joining 50onRed, she served as Assistant General Counsel, Intellectual Property, to Synigy, an international business software and services company, and prior to that, as an intellectual property associate with Volpe & Koenig, PC.

Ms. Shi received dual degrees in Mechanical Engineering (B.S.) and English (B.A.) from Rutgers University, and she graduated *magna cum laude* from the University of Pennsylvania Law School in 2009.



Meredith Slawe L'05

Partner, Drinker, Biddle & Reath LLP (Philadelphia, PA)
Accepting in person at dinner on 3/22

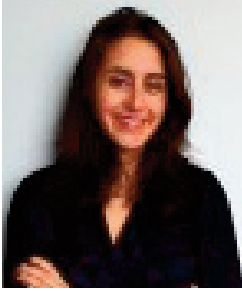
Meredith Slawe is a partner in Drinker, Biddle, & Reath LLP's Litigation Group. She has a broad litigation practice with an emphasis on consumer class actions, business disputes, and internal investigations. She has an outstanding record of defeating cases on the merits and challenging class certification.

Ms. Slawe is also a key member of Drinker Biddle's Telephone Consumer Protection Act (TCPA) Team and publishes regularly on TCPA-related topics. She has extensive experience representing leading companies in putative class actions and individual actions brought under this statute, and she also counsels clients on TCPA compliance measures.

Ms. Slawe is a member of the Corporate Executive Board of the Philadelphia Museum of Art, the American Bar Association's Young Lawyers Division of the White Collar Crime Committee, the Board of Managers of the Penn Law Alumni Society, the National Association of Criminal Defense Lawyers and the Louis D. Brandeis Law Society. She is a member of Drinker Biddle's Women's Leadership Committee, an active participant in the firm's recruiting efforts and mentoring program, and a frequent speaker on career management and work/life balance issues at programs for women lawyers and law students.

Ms. Slawe received her A.B. in Government from Dartmouth College and she received her J.D. from the University of Pennsylvania Law School in 2005.

SPEAKERS



Sheerine Alemzadeh L'11
Law Clerk, *US Court of Appeals for the 7th Circuit*; Co-Founder, *Coalition Against Workplace Sexual Violence*; Chicago, IL



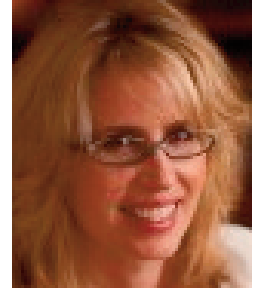
Regina Austin L'73
William A. Schnader
Professor of Law, *Penn Law*
Philadelphia, PA



Sheila Bapat L'07
Writer (focusing on gender & economic justice)
San Francisco, CA



Veenita Bleznak L'94
Chief Operations Officer,
IAmElemental
New York, NY



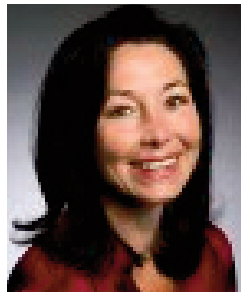
E.J. Borrack C'86, L'90
General Counsel,
Stilwell Group
New York, NY



Hon. Margo Brodie L'91
U.S. District Court Judge,
Eastern District of New York
Brooklyn, NY



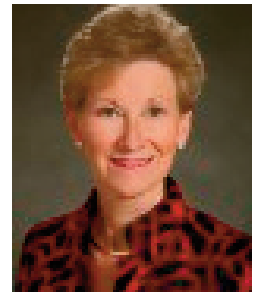
Hon. Allison Burroughs L'88
U.S. District Court Judge,
District Court of Massachusetts
Boston, MA



Safra Catz W'83, L'86
Co-CEO, *Oracle Corporation*
Redwood City, CA



Victoria S. Cook L'98
Partner and Member of the
Entertainment Group,
Frankfurt Kurnit Klein & Selz, PC
New York, NY



Pamela Daley L'79
Senior VP, GE, Retired,
Senior Advisor to the Chairman,
Corporate Business Development
Delray Beach, FL



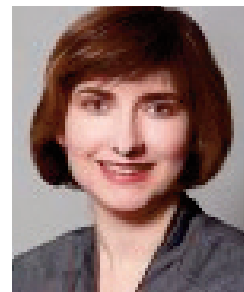
Rangita de Silva de Alwis
Associate Dean for International
Programs, *Penn Law*
Philadelphia, PA



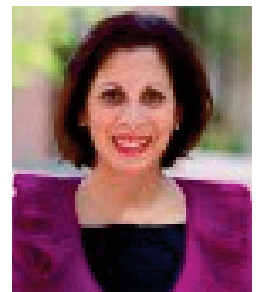
Lisa Detwiler
SVP, General Counsel,
and CCO, FS2 Capital Partners,
a *Franklin Square* company



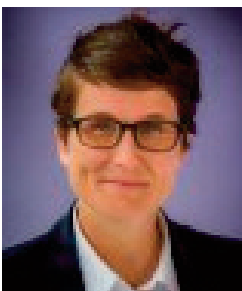
Julie Edelstein L'07
Trial Attorney, U.S. Department of
Justice, National Security Division,
*Counterintelligence and Export
Control Section*



Beth Fenton L'98
Partner, *Saul Ewing LLP*
Wilmington, DE



Claire Finkelstein
Algernon Biddle Professor of
Law and Professor of Philosophy,
Penn Law
Philadelphia, PA



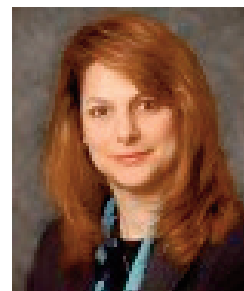
Helen "Nellie" Fitzpatrick
Director of LGBT Affairs,
City of Philadelphia
Philadelphia, PA



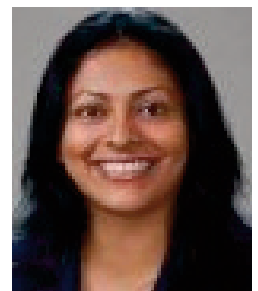
Stephenie Foster L'86
Senior Advisor, Secretary's Office
of Global Women's Issues,
U.S. Department of State
Washington, DC



Heather Frattone W'94, L'98
Associate Dean for Professional
Engagement, *Penn Law*
Philadelphia, PA



Nicole Galli C'89, L'92
Managing Partner,
Law Offices of N.D. Galli LLC
Philadelphia, PA



Manu Gayatrinath L'04
Partner and Global Chair of
Recruiting Committee,
Latham & Watkins
Washington, DC

SPEAKERS



Bernice Grant
Clinical Supervisor & Lecturer for
Entrepreneurship Legal Clinic,
Penn Law
Philadelphia, PA



Francine Griesing L'81
Founder, *Griesing Law*
Philadelphia, PA



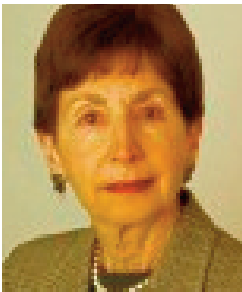
Amy Gutmann
President,
University of Pennsylvania
Philadelphia, PA



Catherine Henry
Senior Litigator, *Federal*
Community Defender Office,
Eastern District of Pennsylvania;
Lecturer, *Penn Law*
Philadelphia, PA



Martha J. Keon C'85, L'93
Shareholder, *Littler Mendelson P.C.*
Philadelphia, PA



Vicki Kramer
President & Founding Member,
The Thirty Percent Coalition;
Former Board Member,
Women's Law Project
Philadelphia, PA



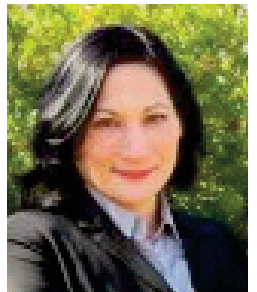
Jana Landon L'99
Counsel; Founder & Chair,
E-Discovery Team,
Stradley Ronon Stevens
& Young LLP
Philadelphia, PA



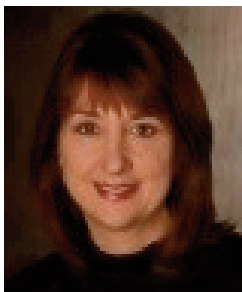
Ann Laupheimer L'84
Partner, *Black Rome LLP*
Philadelphia, PA



Sophia Lee
Professor of Law and History,
Deputy Dean, *Penn Law*
Philadelphia, PA



Nicole Li L'05, GR'04
Founder, *Li Law Firm*
Seattle, WA



Gail Liono L'74
Director, *Sargento Foods, Inc.;*
Fmr. EVP, GC, Secretary,
& Chief Compliance Officer,
Harley-Davidson, Inc.
Washington, DCMilwaukee, WI



Alva Mather L'04
Partner, *Pepper Hamilton LLP*
Philadelphia, PA



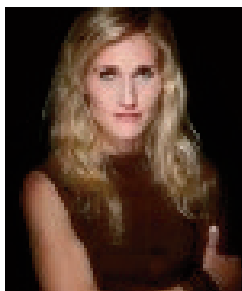
Desiree Maxwell
Special Agent, *Philadelphia FBI*
Safe Streets Violent Drug Gang
Task Force
Philadelphia, PA



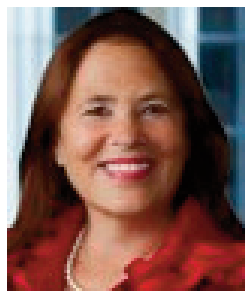
Suzanne Mayes L'91
Member & Chair, Public &
Project Finance, *Cozen O'Connor;*
President, *Forum of*
Executive Women
Philadelphia, PA



Nell McCarthy L'05
Senior Policy Advisor
White House; Former Deputy
Special Master, *9/11 Victim*
Compensation Fund
Washington, DC



Kim McCreight L'98
Author, *Reconstructing Amelia*
and *Where They Found Her*
Brooklyn, NY



Jami Wintz McKeon
Global Chair,
Morgan Lewis & Bockius
Philadelphia, PA



Patricia Menendez-Cambo L'89
Shareholder, VP, Secretary, and
Chair of Global Corp. & Securities
Practice, *Greenberg Traurig*
Miami, FL



Lindsey Middlecamp L'11
Assistant City Attorney,
Civil Litigation, *City of Minneapolis*
Minneapolis, MN



Faith Taylor Moore C'81
Asst. US Atty. & Dep. Chief,
Organized Crime Drug Enforc.
Task Force/Narcotics, U.S.
Attorney's Office, *Eastern District*
of Pennsylvania
Philadelphia, PA

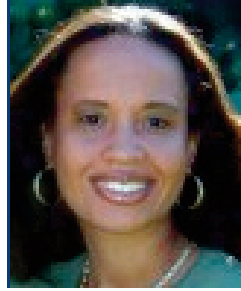
SPEAKERS



Melissa Orlen C'94 L'97
Executive Vice President and
General Counsel,
MovieTickets.com, Inc.
Boca Raton, FL



Heather Orr L'05
Founder, *H50 Law*
Los Angeles, CA



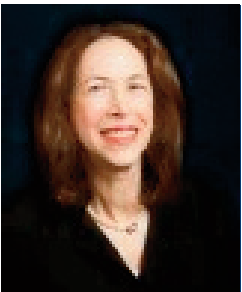
Rachel Pereira L'09
Director of Title IX and Equal
Opportunity, *Vassar College*
Poughkeepsie, NY



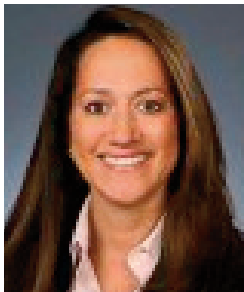
Hon. Deborah Poritz L'77
Former Chief Justice, *New Jersey
Supreme Court*; Of Counsel,
Drinker Biddle & Reath
Princeton, NJ



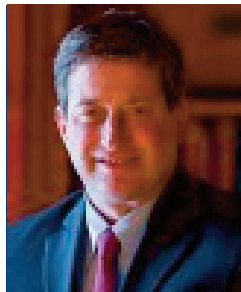
Hon. Gene E.K. Pratter L'75
U.S. District Court Judge,
Eastern District of Pennsylvania
Philadelphia, PA



Helen Pudlin L'74
Fmr. Executive VP and General
Counsel, *PNC Financial Services
Grp.*; Director, *Penn Mutual
Insurance Co.* Philadelphia, PA



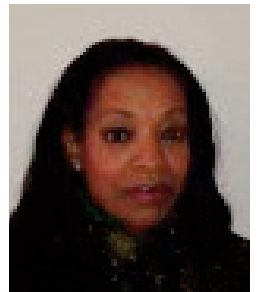
Pilar Ramos C'94, L'97
Executive Vice President, Associate
General Counsel- North America,
Mastercard International
Purchase, NY



Theodore Ruger
Dean, *Penn Law*
Philadelphia, PA



**Sherrie R. Savett CW'70,
L'73**
Managing Shareholder & Chair,
Securities Litigation,
Berger & Montague,
Philadelphia, PA



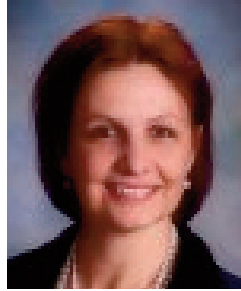
Patricia Viseur Sellers L'79
Special Advisor for Prosecution
Strategies, *International Criminal
Court at The Hague*
Brussels, Belgium



Jessup Shean L'12, WG'12
Vice President, *Greenhill & Co.*;
Co-Founder, *Common Bond*
New York, NY



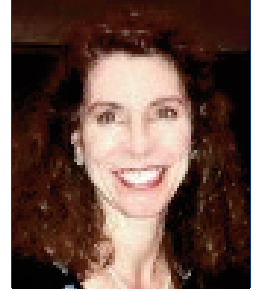
Hon. Patty Shwartz L'86
U.S. Circuit Judge, *United States
Court of Appeals for the
Third Circuit*
Newark, NJ



Petra Smutny GL'13
Former Judge, *Court of Appeals,*
Vienna; Attorney,
Klanzlei Plaz Law Firm
Vienna, Austria



Cheryl Solomon L'95
Former Chief Legal Officer,
TOMS Shoes
Santa Monica, CA



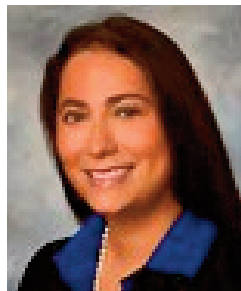
**Shari Solomon C'85, L'91,
WG'91**
General Counsel, *Diamatrix, Inc.*
Fairless Hills, PA



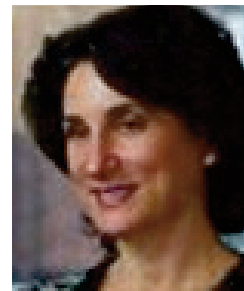
**Tiffany Southerland SPP'08,
L'11**
Professional Recruitment Manager,
Pepper Hamilton LLP
Philadelphia, PA



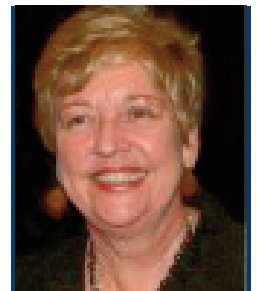
Susan Spaeth L'89
Firmwide Managing Partner,
Kilpatrick Townsend & Stockton
San Francisco, CA



Nicole Sugarman L'09
Assistant General Counsel,
Drexel University
Philadelphia, PA



Jane Summers L'84
Partner, *Latham & Watkins LLP*
New York, NY



Carol Tracy CGS'76
Executive Director,
Women's Law Project
Philadelphia, PA

SPEAKERS



Hon. Karen Valihura L'88
Justice, *Supreme Court of Delaware*
Wilmington, DE



Jo-Ann Verrier L'83
Vice Dean for Administrative Services, *Penn Law*
Philadelphia, PA



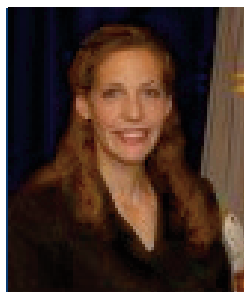
Ambassador Melanne Verveer
Exec. Director, *Georgetown Institute for Women, Peace, and Security*; Fmr. U.S. Ambassador-at-Large for Global Women's Issues
Washington, DC



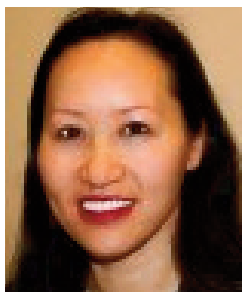
Jan Buckner Walker L'88
President, Executive Editor, and Chief Creative Officer, *Kids Across Parents Down*
Matteson, IL



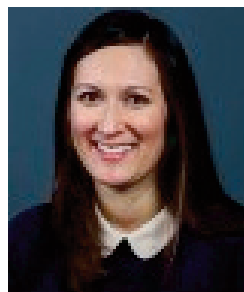
Tess Wilkinson-Ryan L'05
Professor of Law and Psychology, *Penn Law*
Philadelphia, PA



Jennifer Arbittier Williams C'92, L'95
Assistant U.S. Attorney, *U.S. Attorney's Office, Eastern District of Pennsylvania*
Philadelphia, PA



Kam Wong L'94
VP, Diversity & Inclusion Planning & Administration, *Prudential Financial Inc.*
New York, NY



Aretae Wyler L'07
General Counsel and Director, Corporate Operations, *Atlantic Media Company*
Washington, DC



Keita Young L'95
Vice President and Assistant General Counsel, *JPMorgan Chase & Co.*
New York, NY

SUMMIT OUTREACH COMMITTEE

Eleanor Barrett JD 2005

Beth Diffley JD 2004

Heather Frattone JD 1998

Corey Ellen Fulton JD 2007

Randi Garnick JD 1990

Fran Griesing JD 1981

Sarah Hammer JD 2011

Catherine Kessedjian LLM 1981

Jen Leonard JD 2004

Lynn Marks JD 1979

Rachel McQuaid JD 2011

Joy Pollock JD 1968

Heather Stapleton JD 2003

Mariel Staszewski JD 2007

Jo-Ann Verrier JD 1983

CARRIE BURNHAM KILGORE

THE TRAILBLAZING LIFE OF CARRIE BURNHAM KILGORE, PENN LAW'S FIRST FEMALE GRADUATE

As the Inaugural Women's Summit approaches, Penn Law takes a look back at its first female graduate, Carrie Burnham Kilgore, a figure who broke down barriers for women throughout the course of her life.

Carrie Burnham Kilgore was born in 1838 in Vermont and orphaned at the age of twelve. Throughout a combination of teaching and domestic work, she financed her own education and was admitted to the clinics at Bellevue Hospital in New York City, where in 1865 she became the first woman to earn a medical degree in the state of New York.

After receiving her medical degree, Kilgore moved to Philadelphia, where she taught in a "French School for Young Ladies." At the same time, she began reading the law with Damon Kilgore, whom she later married. She is believed to be the first woman to commence the study of law in the United States.

After lobbying the Penn Law administration for 10 years, in 1881 she became the first woman to gain admission to the Law School. In 1883, she was the first woman to graduate from Penn Law, receiving her LLB. She then petitioned the Pennsylvania General Assembly three times before becoming, in 1886, the first woman admitted to the Pennsylvania Bar.

That same year, she became the first woman to serve in a state judiciary when she was appointed to be a master in the chancery in Pennsylvania. She also served as a representative of the Citizen's Suffrage Association of Philadelphia in the conventions of the National Woman Suffrage Association.

Throughout her career, Kilgore defied societally-imposed expectations and restrictions on educational, professional, and civic opportunities based on her gender. Her lifelong pursuit of her intellectual and professional passions was fueled by an incomparable amount of determination, confidence in her own abilities, and her dogged persistence in the face of fierce opposition of those who refused her and her fellow women the same opportunities afforded men.

While she broke down many barriers, Kilgore herself did not have access to a network of likeminded women lawyers in her lifetime. In 1890, Lelia J. Robinson, LLB conducted an informal census of all female law graduates and practicing female lawyers in the United States and found that "Mrs. Kilgore regrets that no other women are practicing or studying law in Philadelphia, and says she would like to have a lady student in her office, and would give such a one a good chance with her after admission to the bar."

The Inaugural Penn Law Women's Summit celebrates the vibrant community of women at Penn Law who mutually support each other — a community that Carrie Burnham Kilgore did not have. In addition to cultivating that community at Penn Law, the Summit endeavors to extend this community to include women leaders and advocates for women from across the globe, from Penn and beyond, to inspire, educate, and connect women everywhere. We recognize Kilgore's trailblazing efforts to create this community and honor those who continue her mission in awarding the inaugural Carrie Burnham Kilgore Award to former Secretary of State Hillary Clinton and Oracle Co-CEO Safra Catz W'83, L'86.



GENERAL INFORMATION

The law school's address and location of the main entrance is 3501 Sansom Street. Please enter using our Silverman Hall entrance on 34th Street at Chestnut.

PARKING

Garage 37, located at 34th & Chestnut Streets (entrance is located on 34th St.), is the lot closest to the Law School and will be open from 8 AM -11 PM.

Parking is also available in lots throughout the Penn campus. For more information, call the Parking Office at 215.898.8667, email parking@exchange.upenn.edu, or visit their website at www.upenn.edu/parking. In and out privileges are not available. Phone numbers are posted on the entrance to each garage in case the lot is closed after a late-night event.

REGISTRATION TABLES/ARRIVAL INFORMATION

General registration is located just inside the Law School's 34th St. entrance, at 3400 Chestnut St. Please check in to receive your Women's Summit badge that you will keep with you and wear in order to gain entrance to all activities throughout the conference.

Please note: VIP check-in for speakers, honorees, and platinum sponsors is located just inside the Law School's Sansom St. entrance, at 3501 Sansom St.

COAT CHECK/LUGGAGE

We will have coat racks available for registrants' use in Silverman Hall, near the 34th St. entrance to Penn Law. We will also have a non-staffed luggage storage room available within the Law School for those bringing suitcases or extra large baggage.

WIFI ACCESS

Women's Summit registrants will be provided with guest wifi access free of charge throughout the Summit.

DOWNLOAD OUR APP

Search for "WhoVa" in the App store and click on the Penn Law Women's Summit event. This app allows you to search for and message fellow attendees, scan business cards, read bios on all panelists and honorees, review the schedule, check into events, access maps and general event info, upload photos, tweet – and more!

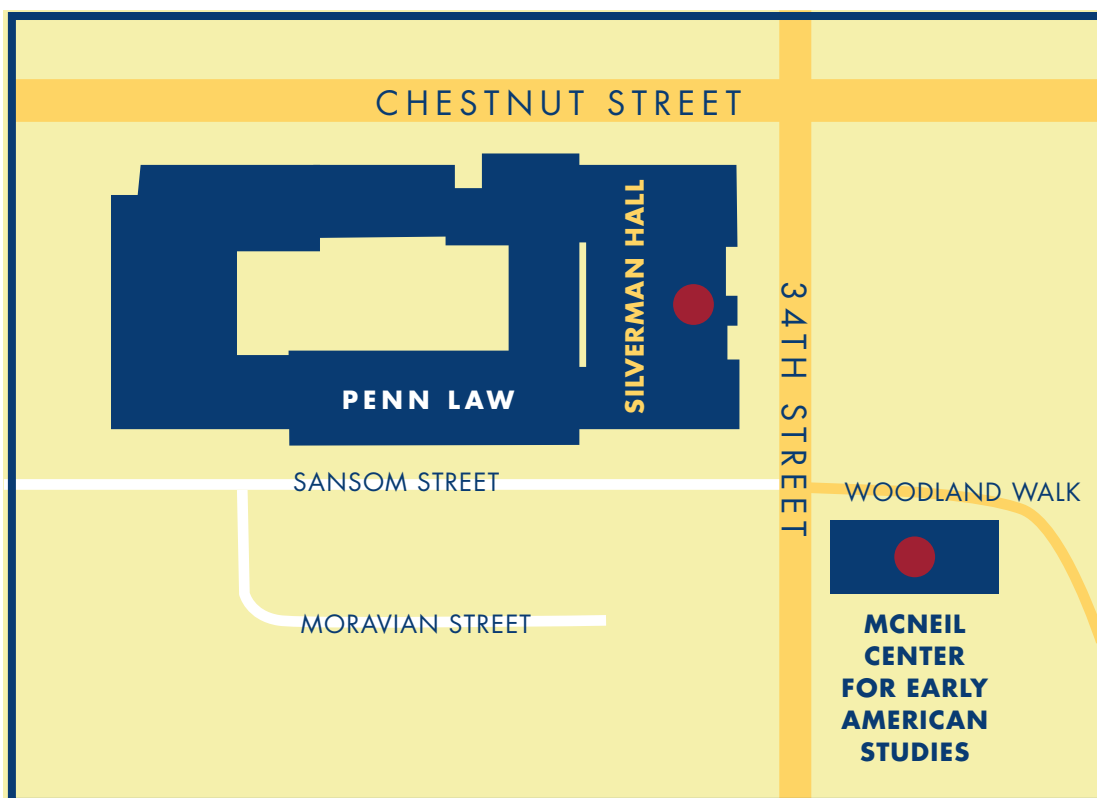
If prompted to enter a code, please use PLWS16. Official event hashtag is #PENNLAWWOMEN

PANEL DISCUSSION LOCATIONS

Our panels primarily take place in two locations:

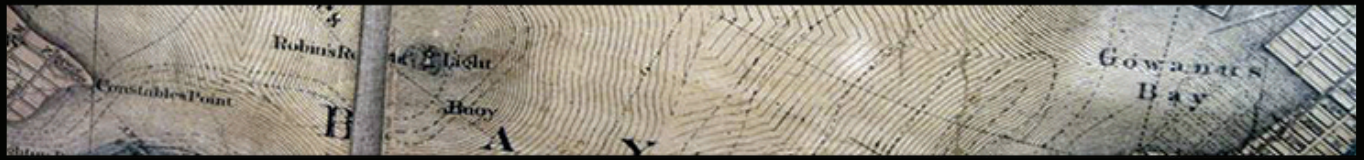
- 1) **Silverman Hall, Room 147**
(located just off of the 3400 Chestnut St. entrance to Penn Law)
- 2) **Penn's McNeil Center for Early American Studies**
(located across the street from, and slightly to the right of, Penn Law's 3400 Chestnut St. entrance and near 34th/Sansom St.)

Distance between the two locations: 1-2 minutes on foot





WACHTELL, LIPTON, ROSEN & KATZ



Wachtell, Lipton, Rosen & Katz
proudly supports the inaugural

Penn Law Women's Summit

presented by
The University of Pennsylvania Law School
and
The Carrie Burnham Kilgore Society

WACHTELL, LIPTON, ROSEN & KATZ
51 WEST 52ND STREET
NEW YORK, NY 10019
212-403-1000
WWW.WLRK.COM



Penn Law School and the Kilgore Society would like to thank all of our 2016 Women's Summit sponsors for their generous support.

PLATINUM SPONSORS

Morgan Lewis

WACHTELL, LIPTON, ROSEN & KATZ

BRONZE SPONSORS

Dechert
LLP

DrinkerBiddle®

RED SPONSORS

GIBSON DUNN

Weil

BLUE SPONSOR



WWW.LAW.UPENN.EDU/WOMENS-SUMMIT